

Hull Nº

1586

REFRIGERATED CARGO VESSEL

Shipowner:
ALBAFRIGO CANARIAS

SALICA FRIGO

Built:
2001



Hull Nº
1586

Main Particulars:



Length Overall: 132.9 m

Length between Perpendiculars: 120 m

Moulded Breadth: 18.80 m

Depth to Main Deck: 10.28 m

Summer Draught: 8 m

Deadweight to Summer Draught: 7710 T

Propelling Power: 6300 kW

Service Speed: 17 knots

Crew: 25 people

Classification:

Bureau Veritas: I ✕Hull ✕Mach Unrestricted navigation, Refrigerated cargo ship ✕AUT-UMS ✕REF-CARGO-QUICKFREEZE

Propulsion & Manoeuvring Equipment:

Main engine: 6300 kW at 500 rpm

Diesel Generator Engines: 2 generating sets of 1250 BHP (990 kW) at 1000 rpm

Bow Thruster: controllable pitch, 500 BHP, electrically driven

Emergency Genset: 640 kW at 1000 rpm

Cargo Capacity:

4 Holds

Holds Capacity: 310000 ft approx.

Refrigerated store with meat and fish chambers at less than 20°C and antechamber at 0°C

Cargo Equipment:

4 Cranes Hydraulically Operated, 6000 kg at 18 m with hoisting speed of 60 m/min

Aft Crane, electrohydraulic, service and spares: 1.5 Ton at 9 m

Tanks Capacity:

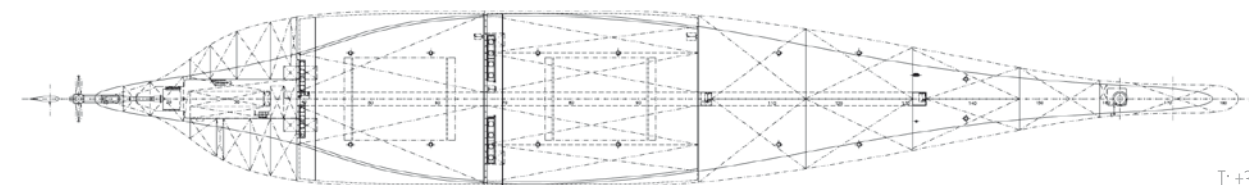
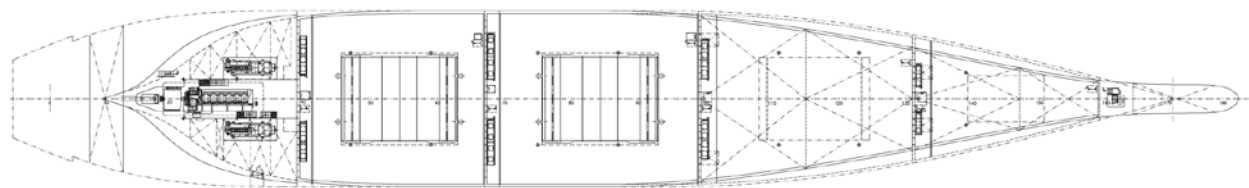
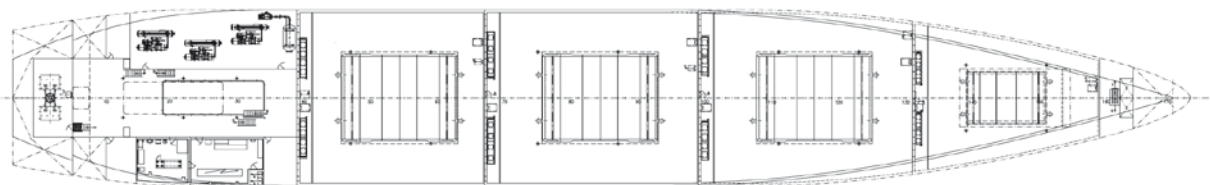
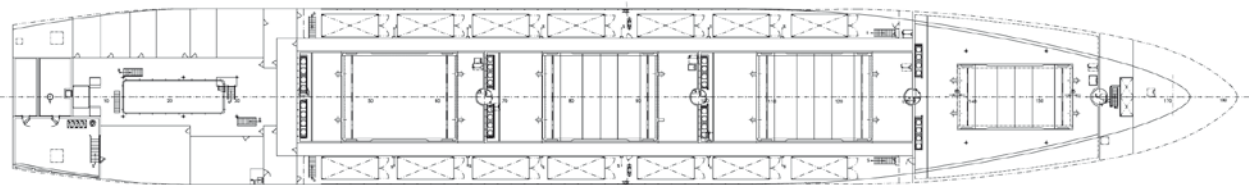
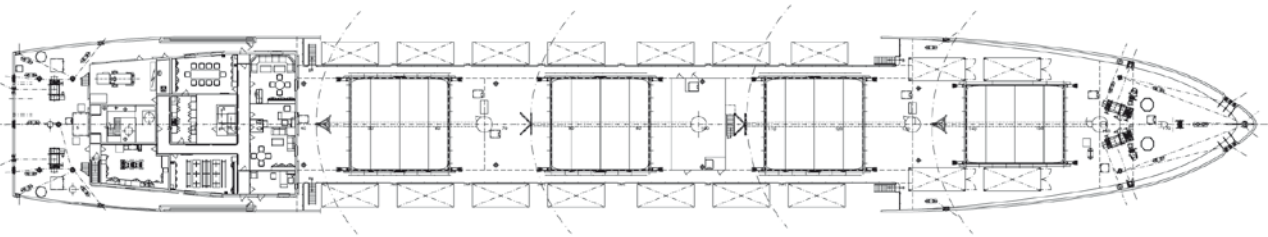
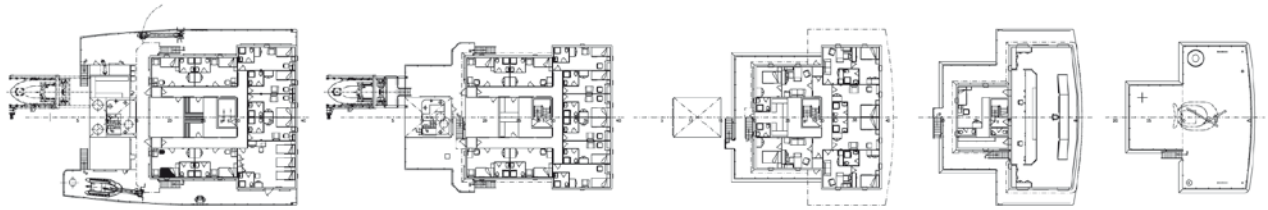
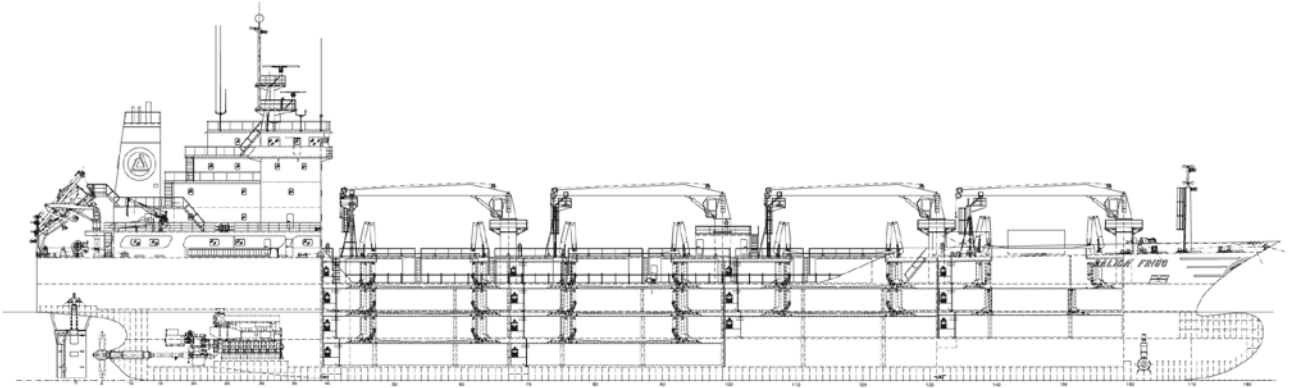
Fresh Water Capacity: 87 m³ approx.

Ballast Capacity: 1200 m³ approx.

Lub. Oil Capacity: 45 m³ approx.

Gas-Oil Capacity in Tanks: 1660 m³ approx.

Hull N°: 1586 / Name: SALICA FRIGO / Built: 2001



VIGO/SPAIN

T: +34 986 213 297
astillero@hjbarreras.es
www.hjbarreras.es