

Hull Nº

1663

PASSENGER FERRY VESSEL

Shipowner:  
EUROLÍNEAS MARÍTIMAS S.A.

PASSIÓ PER FORMENTERA

Built:  
2009



Hull Nº  
1663

## Main Particulars:



*Length Overall:* 101.00 m  
*Length between Perpendiculars:* 86.60 m  
*Moulded Breadth:* 17.00 m  
*Depth to Upper Deck:* 11.50 m  
*Depth to Main Deck:* 6.00 m  
*Extreme Draught:* 4.30 m  
*Design Moulded Draught:* 4.00 m  
*Deadweight at 4.00 m approx.:* 850 T  
*Service Speed:* 20.89 knots  
*Range at Service Speed:* 2200 miles

## Classification:

Bureau Veritas: 1✶Hull✶MACH Ro-Ro passenger ship, Unrestricted navigation, AUT-UMS, AUT-PORT, INWATER SURVEY

## Propulsion & Manoeuvring Equipment:

*Main Engines:* 2 x 4500 kW at 750 rpm  
*Generating Sets:* 3 x 560 kW at 1500 rpm  
*Emergency Gensets:* 1 x 280 kW at 1500 rpm  
2 x CP Main Propellers, 4 Blades, 3000 mm Diameter  
2 x 495 kW CP Bow Tunnel Thrusters

## Cargo Capacity:

*Max. Capacity (crew + passengers):* 800 people  
*Number of Cargo Decks:* 1 + 1 cardeck  
*Maximum Cargo Capacity for Cars:* 540 LM (2.2 m width)  
*Maximum Cargo Capacity for Trailers:* 304 LM (2.9 m width)

## Cargo Equipment:

*1 Stern Ramp-Door:* 10 m length x 9 m wide  
1 Movable Cardeck in Garage between Upper Deck No. 2 and Deck No. 4  
Fore Ramp-Door "Clamp Type" for the access of cars from shore

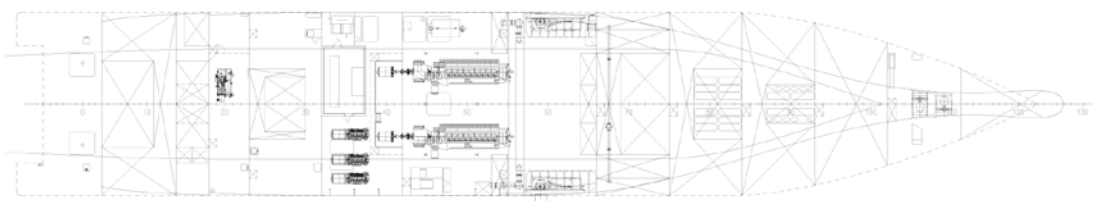
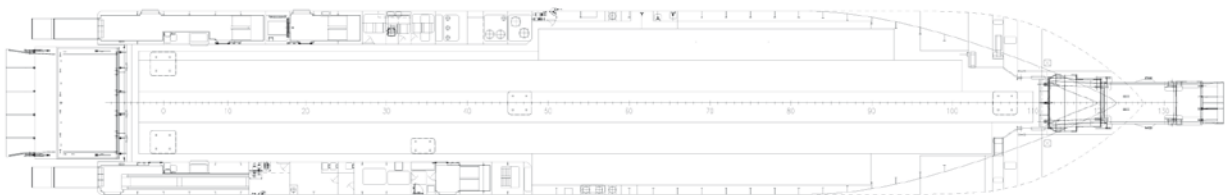
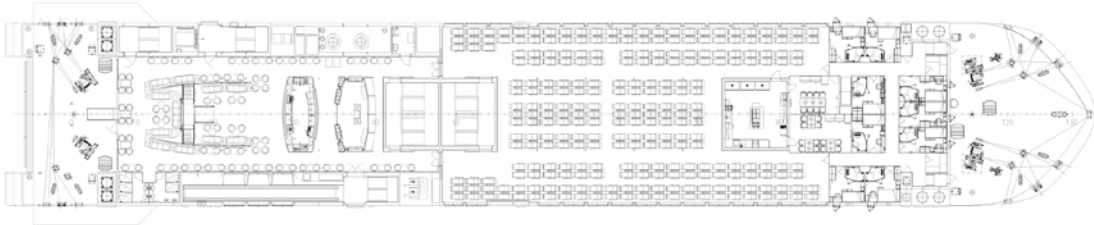
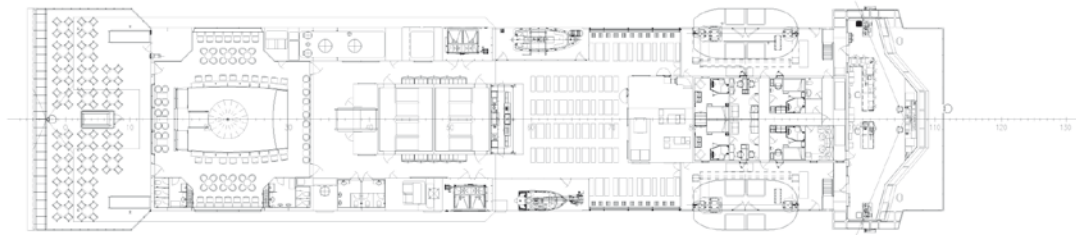
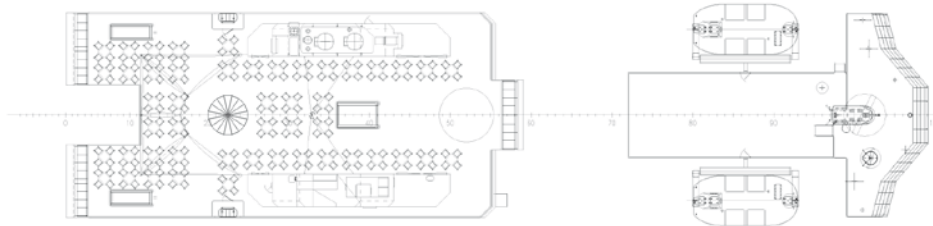
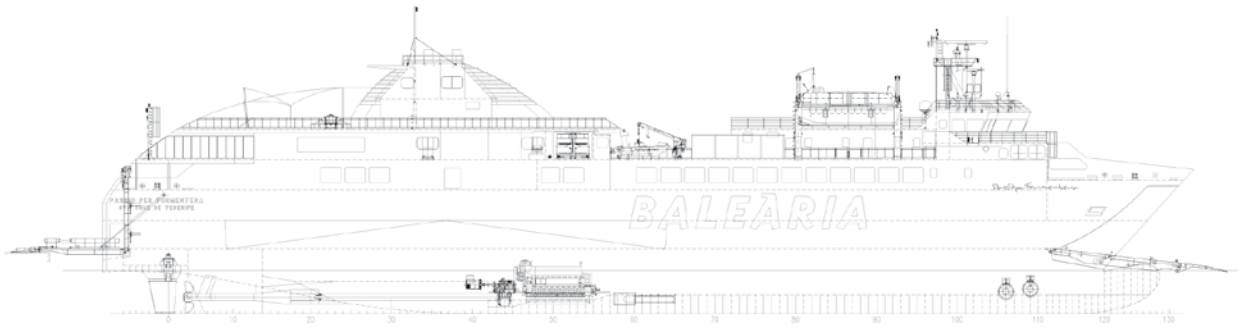
## Tanks Capacity:

*Fuel-Oil Capacity:* 225 m<sup>3</sup>  
*Diesel-Oil Capacity:* 46 m<sup>3</sup>  
*Lub. Oil Capacity:* 32 m<sup>3</sup>  
*Fresh Water Capacity:* 42 m<sup>3</sup>

Hull N°:  
1663

Name:  
PASSIÓ PER FORMENTERA

Built:  
2009



VIGO/SPAIN

T: +34 986 213 297  
astillero@hjbarreras.es  
[www.hjbarreras.es](http://www.hjbarreras.es)