

Hull Nº

1625

1500 PASSENGERS FERRY VESSEL

Shipowner:
MARÍTIMA DE LAS ISLAS, S.L.

VOLCAN DE TAMASITE

Built:
2004



Hull Nº
1625

Main Particulars:



Length Overall: 142.45 m

Length between Perpendiculars: 125.00 m

Moulded Breadth: 24.20 m

Depth to Deck No.3 (Main Deck): 8.35 m

Depth to Deck No.4 (Upper Deck): 13.55 m

Total Number of Decks: 8

Design Draught: 5.70 m

Summer Draught: 5.70 m

Deadweight at Summer Draught: 3400 T

Service Speed: 21 knots

Number of Superstructure Decks: 3

Classification:

Bureau Veritas: I ✕HULL ✕ MACH, RO-RO PASSENGER SHIP, UNRESTRICTED NAVIGATION, INWATER SURVEY, AUT-UMS

Propulsion & Manoeuvring Equipment:

Main Engines: 2 x 8400 at 500 rpm

Generating Sets: 2 x 1100 kW at 1000 rpm

Emergency Genset: 1 x 270 kW at 1500 rpm

2 x CP Main Propellers, 4 Blades, 4200 mm Diameter

2 x 1000 kW CP, Bow Tunnel Thrusters

Cargo Capacity:

Max. Capacity (Crew + Passengers): 1500 people

Number of Cargo Decks: 2 + 1 cardeck

Cargo Capacity with Cars and Trailers:

Lanes Length of 2.10 m wide: 1970 m / *Lanes Length of 3.00 m wide:* 600 m

Capacity for Cars: 404 / *Capacity for Trailers:* 33

Cargo Capacity Only with Trailers:

Lanes Length of 3.00 m wide: 1270 m / *Capacity for Trailers:* 69

Cargo Equipment:

2 *Stern Ramp-Doors:* 16.0 m x 8.0 m width

2 *Fixed Ramps between Main Deck and Upper Deck:* 38.0 m x 3.5 m width

1 *Hoistable Cardeck betw. Upper Deck and Deck 6*

2 *Hoistable Ramps for Access to the Cardeck from Upper Deck Aft*

2 *Hoistable Ramps for Access to the Cardeck from Upper Deck Fore*

Tanks Capacity:

Fuel-oil Capacity: 621 m³

Diesel-oil Capacity: 92 m³

Lub. Oil Capacity: 45 m³

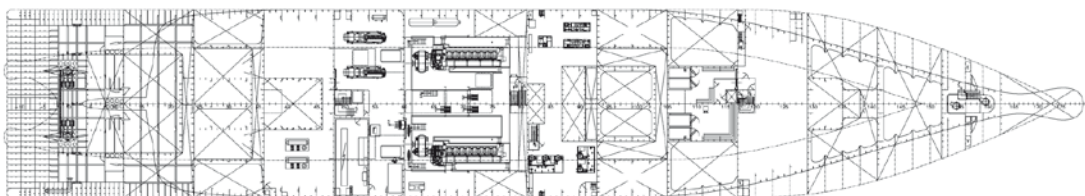
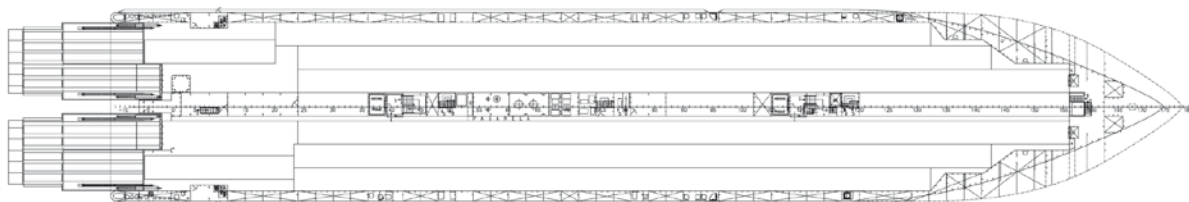
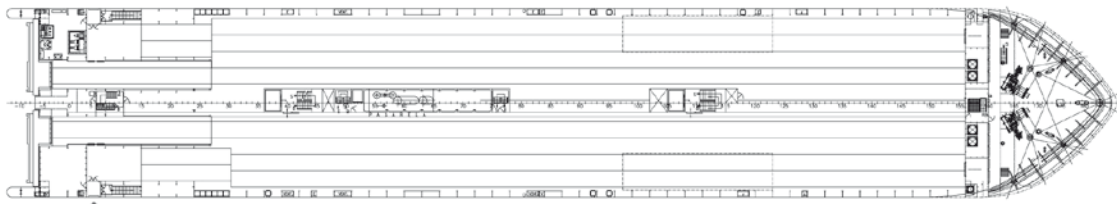
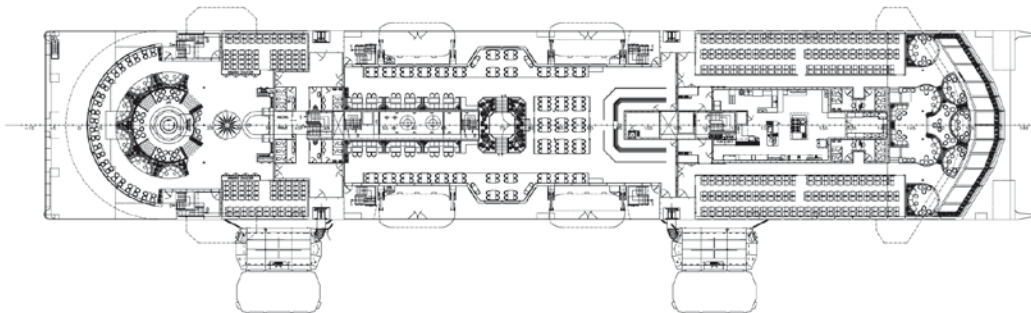
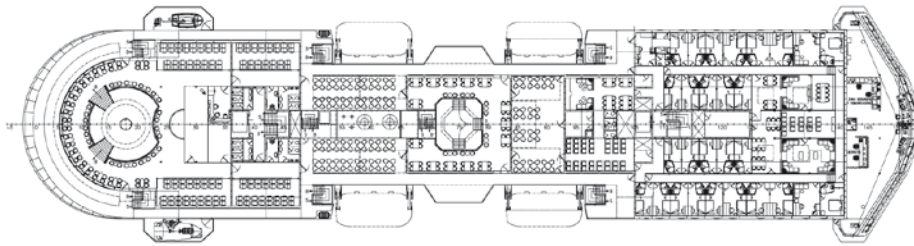
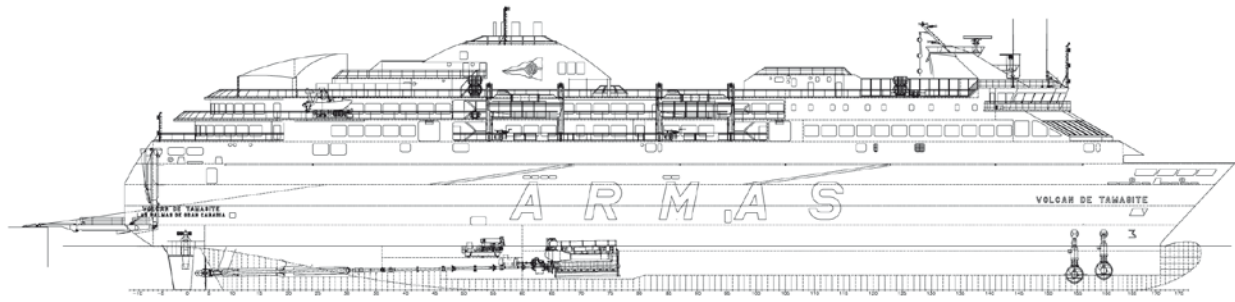
Fresh Water Capacity: 93 m³

Ballast Water Capacity: 1685 m³

Hull N°:
1625

Name:
VOLCAN DE TAMASITE

Built:
2004



VIGO/SPAIN

T: +34 986 213 297
astillero@hjbarreras.es
www.hjbarreras.es